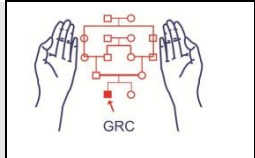


GRC Lab Test List

Genetics Resource Centre (GRC)

Effective: 1st Jan 2024



| Test | Time | Sample | CHARGES |
|---|---------|--|-----------|
| Genetic Disorders | | | |
| Prenatal Diagnosis of Thalassaemia | 8 days | CVS and 2ml of each parent's blood in | Rs.10,000 |
| Prenatal Diagnosis of Trisomy 21 | 8 days | CVS and 2ml of each parent's blood in | Rs.12,000 |
| Prenatal Diagnosis of Trisomy 13, 18, & 21 | 8 days | CVS and 2ml blood of each parent | Rs.20,000 |
| Prenatal Diagnosis of SMA (SMN1 Deletion) | 8 days | CVS and 2ml of each parent's blood in | Rs.12,000 |
| Prenatal Diagnosis of Duchene Muscular Dystrophy (DMD) | 8 days | CVS & 2 ml blood in EDTA of each parent & affected | Rs.12,000 |
| Prenatal Diagnosis of uncommon genetic disorders (known variants) | 8 days | CVS | Rs.40,000 |
| Fetal Rh-D Typing | 4 days | CVS | Rs.8,500 |
| Genetic testing known variants | 8 days | 3 ml blood in EDTA | Rs.25,000 |
| Genetic testing (overseas) | 6 weeks | 3 ml blood in EDTA | Rs.130,00 |
| Chorionic Villus Sampling (CVS) | - | Patient | Rs.8,000 |
| Amniocentesis | - | Patient | Rs.5,000 |
| Haemoglobin Studies | 3 days | 3 ml blood in EDTA | Rs.2,000 |
| DNA Extraction | 2 days | 2 ml blood in EDTA | Rs.2,500 |
| PCR for Delta 508 Mutation | 4 days | 2 ml blood in EDTA | Rs.5,000 |
| PCR for SMA (SMN-1 gene deletion) | 5 days | 2 ml blood in EDTA | Rs.6,500 |
| PCR for trisomies 13, 18, 21 | 5 days | 2 ml blood in EDTA | Rs.20,000 |
| PCR for trisomy 21 (Downs syndrome) | 5 days | 2 ml blood in EDTA | Rs.12,000 |
| PCR for DMD | 5 days | 2 ml blood in EDTA | Rs.10,000 |
| PCR for Sex determination | 4 days | 2 ml blood in EDTA | Rs.8,000 |
| PCR for Thalassaemia | 4 days | 2 ml blood in EDTA | Rs.4,000 |
| Xmn-I Genotyping | 4 days | 2 ml blood in EDTA | Rs.4,000 |
| PCR for JAK2 Mutation | 4 days | 2 ml blood in EDTA | Rs.6,000 |
| Donor Chimerism Study | 5 days | Recipient pre/post-transplant & donor | Rs.15,000 |
| Infectious Diseases | | | |
| HBV & HCV Qualitative PCR | 3 days | 0.5-1.0 ml plasma or | Rs.4,000 |
| HBV & HCV Quantitative PCR | 3 days | 0.5-1.0 ml plasma or | Rs.4,000 |
| HCV Genotyping | 5 days | 0.5-1.0 ml plasma or | Rs.7,000 |
| CMV Quantitative PCR | 2 days | 2 ml clotted blood | Rs.10,000 |

#GRC offers special discounts for the labs/hospitals having substantial workload.