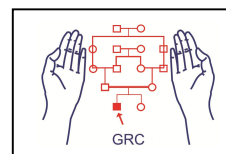


GRC Lab Specialized Test List & Charges

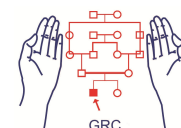
Genetics Resource Centre (GRC)

Effective: 1st Jan 2015



Test	Time	Sample	Charges [#]
Prenatal Diagnosis of Thalassaemia	8 days	CVS and 2 ml of each parent's blood in EDTA	Rs. 6500
Prenatal Diagnosis of Trisomy 21	8 days	CVS and 2 ml of each parent's blood in EDTA	Rs. 6500
Prenatal Diagnosis of Trisomy 13, 18 & 21	8 days	CVS and 2 ml of each parent's blood in EDTA	Rs. 7500
Prenatal Diagnosis of Duchene Muscular Dystrophy (DMD)	8 days	CVS & 2 ml blood in EDTA of each parent & affected child	Rs. 6500
Prenatal Diagnosis of other disorders	8 days	CVS and 2 ml each parent's blood in EDTA	Rs. 6500
Fetal RhD Typing	4 days	CVS	Rs. 6500
Chorionic Villus Sampling (CVS)	-	Patient	Rs. 2000
Amniocentesis	-	Patient	Rs. 2000
Haemoglobin Studies	4 days	3 ml blood in EDTA	Rs. 1200
Cytogenetics	15 days	3 ml blood in Na Heparin	Rs. 3500
DNA Extraction	2 days	2 ml blood in EDTA	Rs. 1000
PCR for Delta 508 Mutation	4 days	2 ml blood in EDTA	Rs. 4000
PCR for JAK2 Mutation	4 days	2 ml blood in EDTA	Rs. 4000
PCR for bcr-abl gene rearrangement	4 days	2 ml blood in EDTA	Rs. 5500
Donor Chimerism Study	8 days	2 ml blood in EDTA recipient pre/post transplant & donor	Rs. 8500
Qualitative PCR for HBV & HCV	4 days	0.5-1.0 ml plasma or serum	Rs. 5000
Quantitative PCR for HBV & HCV	4 days	0.5-1.0 ml plasma or serum	Rs. 6000
HCV Genotyping	10 days	0.5-1.0 ml plasma or serum	Rs. 7000
HCV PCR & Genotyping	10 days	0.5-1.0 ml plasma or serum	Rs. 10000
PCR for Dengue	2 days	0.5-1.0 ml plasma or serum	Rs. 4000
PCR for Malaria	2 days	2 ml blood in EDTA	Rs. 2000
PCR for DMD	8 days	2 ml blood in EDTA	Rs. 4000
PCR for Sex determination	4 days	2 ml blood in EDTA	Rs. 4000
PCR for Thalassaemia	4 days	2 ml blood in EDTA	Rs. 3000
Xmn-I Genotyping	4 days	2 ml blood in EDTA	Rs. 3000
PCR for Thalassaemia & Xmn-I Genotyping	6 days	2 ml blood in EDTA	Rs. 5000

#GRC offers special discounts for the labs/hospitals having substantial quantum of workload



Discount Packages

Patients suffering from chronic HCV or HBV infection, Chronic myeloid leukaemia and those undergoing bone marrow transplant require serial monitoring of response to treatment by PCR. GRC offers a special package for such patients if they register with GRC. Each patient will be issued a registration card on which the date and result of the serial PCRs would be documented. The registration, in addition to the discount in price, would also allow us to monitor any unexpected test results. In case of any major discrepancy GRC would provide free of charge retesting on a fresh sample.

Chronic HCV Infection:

- | | |
|---|------------|
| 1. 1 st visit (registration): HCV Quantitative PCR & Genotyping: | Rs. 8000/- |
| 2. 2 nd visit: HCV Quantitative PCR | Rs. 5000/- |
| 3. 3 rd visit HCV Quantitative PCR | Rs. 4000/- |
| 4. All subsequent visits HCV Quantitative PCR | Rs. 3000/- |

Chronic HBV Infection

- | | |
|---|------------|
| 1. 1 st visit (registration): HBV Quantitative PCR | Rs. 6000/- |
| 2. 2 nd visit: HBV Quantitative PCR | Rs. 5000/- |
| 3. 3 rd visit HBV Quantitative PCR | Rs. 4000/- |
| 4. All subsequent visits HBV Quantitative PCR | Rs. 3000/- |

Chronic Myeloid Leukaemia

- | | |
|--|------------|
| 1. 1 st visit (registration): | |
| a. Conventional Cytogenetics | Rs. 3000/- |
| b. Quantitative PCR for bcr-abl | Rs. 5000/- |
| 2. All subsequent visits: | |
| a. Conventional Cytogenetics | Rs. 2500/- |
| b. Quantitative PCR for bcr-abl | Rs. 4500/- |

Donor Chimerism Study for patients undergoing Bone Marrow Transplant

- | | |
|--|------------|
| 1. 1 st visit (registration): Donor Chimerism Study | Rs. 8500/- |
| 2. All subsequent visits: Donor Chimerism Study | Rs. 7500/- |

