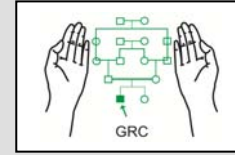
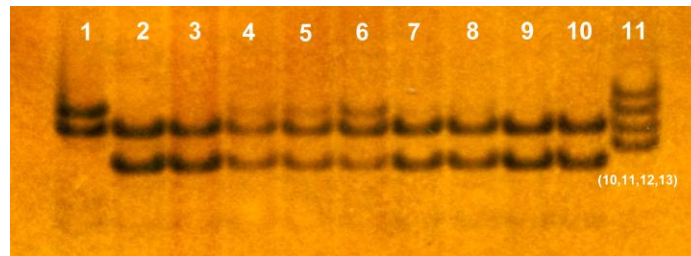


Donor Chimerism Study

Genetics Resource Centre (GRC)



Donor chimerism study is done for quantitative assessment of the outcome of bone marrow or stem cell transplant. This is usually done by analysis of Short Tandem Repeats (STR). Out of the several STR markers an informative marker is chosen for comparison of the donor and the recipient pre/post transplant samples. In serial testing over time the previous samples are also included in the comparison. GRC offers comprehensive testing protocol for analysis at over a dozen STR loci. The results are usually available in 3-4 days or even earlier in urgent cases.



Samples required:

We require 2 ml blood in EDTA from the recipient (pre & post transplant) and the donor. We strongly recommend collecting the recipient's pre-transplant blood sample before initiating the transplant protocol. If this is not available then we may have to collect the recipient's buccal smear.

