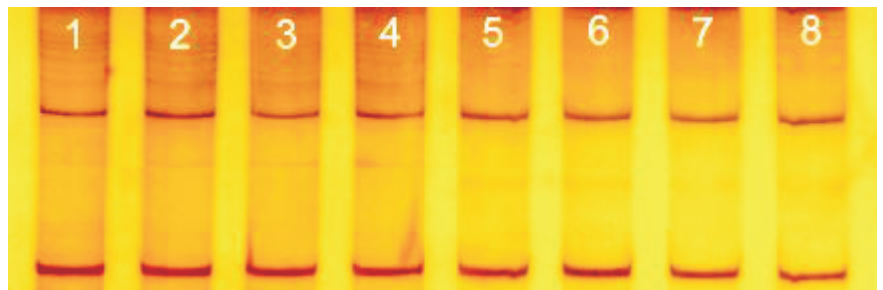


Genetic Technology Instrumentation

# GTI-16 DNA Thermal Cycler

Polymerase Chain Reaction (PCR) has made the analysis of genes simple and cheap. A large number of diseases with a genetic basis, for example inherited and neoplastic, can be diagnosed by PCR. The ease with which common inherited disorders like thalassaemia can be diagnosed in early pregnancy has almost completely changed the concept of its management. PCR can also be used to identify the causative agents of most infectious diseases. The hazardous procedure of viral culture is almost completely replaced by simple accurate and rapid PCR based assays. PCR, in spite of being a useful diagnostic technique, has remained underutilized especially in countries with limited resources. An important reason for its underutilization is the high cost of the PCR machines. GTI-16 is a low cost Peltier based DNA thermal cycler that is highly efficient in running basic to complex PCR applications in diagnostic as well as research use.

- Compact 16 well format
- Real time graphic LCD display
- Fully programmable with 100 program storage capacity
- Ramping up and down at 1.5°C per second
- Reaction volume 5-30 µl
- Restart capability after program interruption by power failure
- Low power consumption
- Works on any household UPS
- Heated lid
- Average PCR application takes 90 minutes



**Genetic Technology Instrumentation  
(GTI)**

Phone: +92-51-5167312

E-mail: [info@grcpk.com](mailto:info@grcpk.com)

[www.grcpk.com](http://www.grcpk.com)